

CORPORATE OFFICE:

📍 T418 - 423, 3rd Floor, 'A' Block
Palam Corporate Plaza, Rezang-la Marg
Gurgaon-122 017, Haryana, India

☎ +91 (0) 124 4074167, 4267167
✉ info@sfeindia.com
🌐 www.sfeindia.com

REGD OFFICE:

📍 C-27/273, Plot No, 11 & 12
Sri Das Nagar Colony, Maldahiya
Varanasi-221 002, U.P., INDIA

OVERSEAS OPERATIONS:

SFE CORPORATION CANADA

📍 1599 Hollywell Avenue, Mississauga,
ON L5N4P6, CANADA

PT. SHARMA FABRICATORS AND ERECTORS

📍 Menara Cyber 2 Lt. 18 Jt H. R.
Rasuna Said No.13 No.13rt.007

KUNINGAN TIMUR, SETIBUDI

📍 Kota Adm. Jakarta Selatan Dki Jakarta



**CONSTRUCTING
INDUSTRIES.....
MARCHING
GLOBALLY**

**COMPANY
PROFILE-2024**





HISTORY THAT SPEAKS

A dream comes true...

Many people dream, but only a few have the courage and conviction to transform such dreams into reality. In 1954, the late Ram Surat Sharma, our eternal inspiration, dreamed of offering the country quality construction of international standard – with or without overseas support. The result is Sharma Fabricators and Erectors (P) Ltd. (SFE).

From a confident beginning...

Since its foundation, SFE has flourished over 70 golden years, emerging as a leader in pulp and paper mill erection. Our experience, blended with sincerity, commitment, courage, hard work, quality, and a sense of belonging, has consolidated our position and provided us with a unique advantage: being blessed with repeat orders from all the clients we have had the privilege to serve.

Further to the 'West', 'South East' and 'Oceanian'...

Like all vibrant entrepreneurs, after consolidating our presence at home, we began to explore opportunities in the Western, Eastern, and Oceanian regions – the developed parts of the world – aiming to conquer new peaks. We successfully expanded our operations to Austria, Canada, Finland, France, Germany, Israel, Italy, Jordan, Portugal, Saudi Arabia, the US, Turkmenistan, the UAE, and Uruguay, returning with flying colors. Along the way, we also ventured into the East, leaving our mark in Japan. More recently, we have established our presence in Vietnam, Indonesia, and New Caledonia.

To an illustrious journey...

After consolidating our position in the country's mechanical and piping construction activities, we expanded our horizon to include electrical and instrumentation services, continuing to be the preferred choice of our clients. Leveraging our growing expertise, we successfully diversified into other industries such as petrochemicals, aluminum, staple rayon fiber, power, minerals, and beyond. The opportunities for growth and expansion continue to broaden.

And looking ahead...

Passion is the key to success. At SFE, this abundant flame of passion, combined with future-compatible knowledge, mindset, expertise, commitment, and resources, drive us forward. We are confident in our ability to overcome all upcoming challenges, making the impossible possible. Humbly, we stand ready to assist all our esteemed clients in their hour of need.

TABLE OF CONTENT

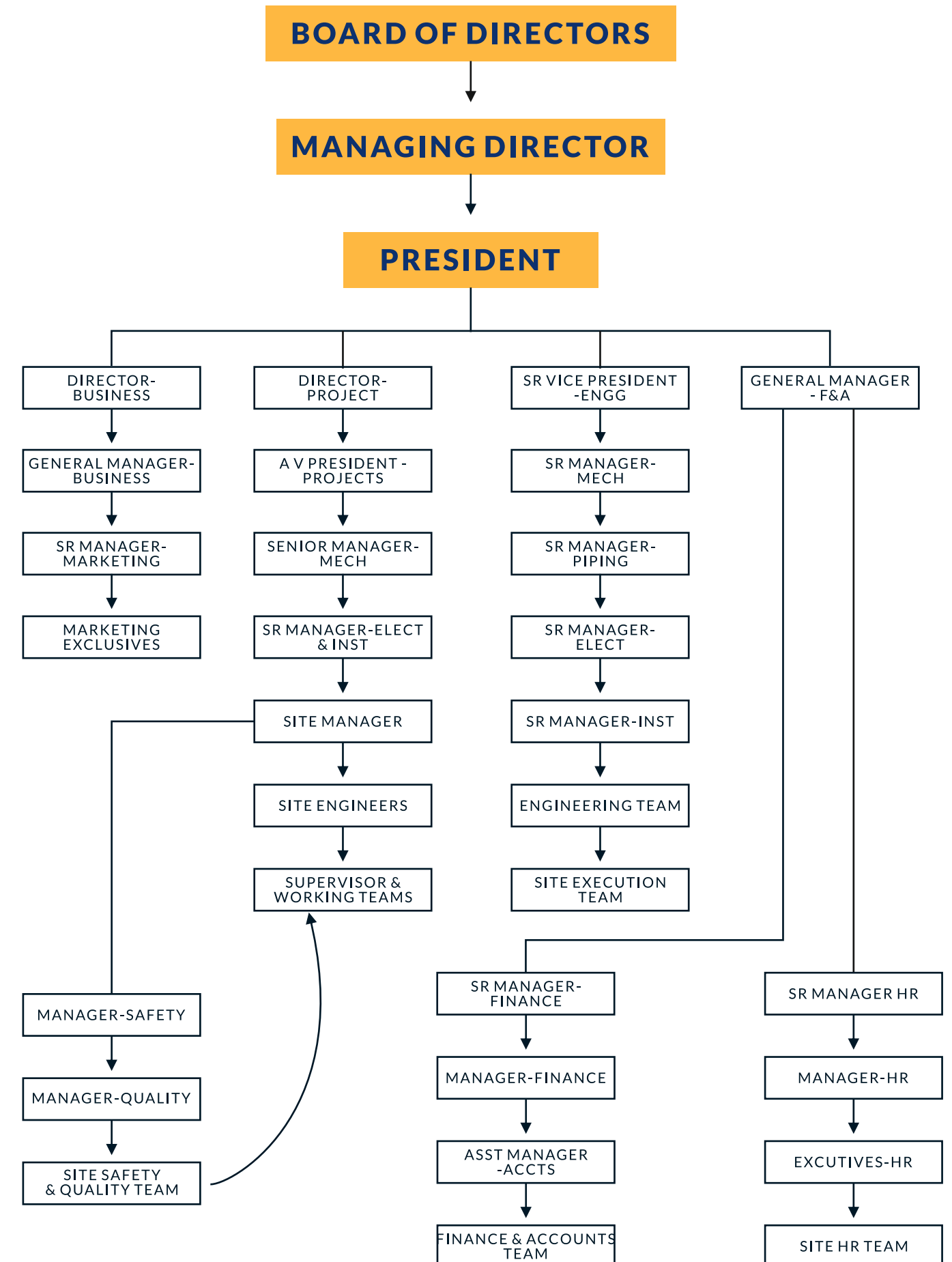
History That Speaks	02
The House of Commitment	03-04
Diverse Services	05-08
Service That Satisfies	09
Mechanical Division	10-12
Electrical Division	13
Serving Industrial Growth	14
Men at the Helm	15-16
Certifications	17-20
Our Presence	21

Passionate for
Reliability, Responsibility
and Respectability.

Striving for
Excellence, Safety, Quality
and on time performance.



THE HOUSE OF COMMITMENT



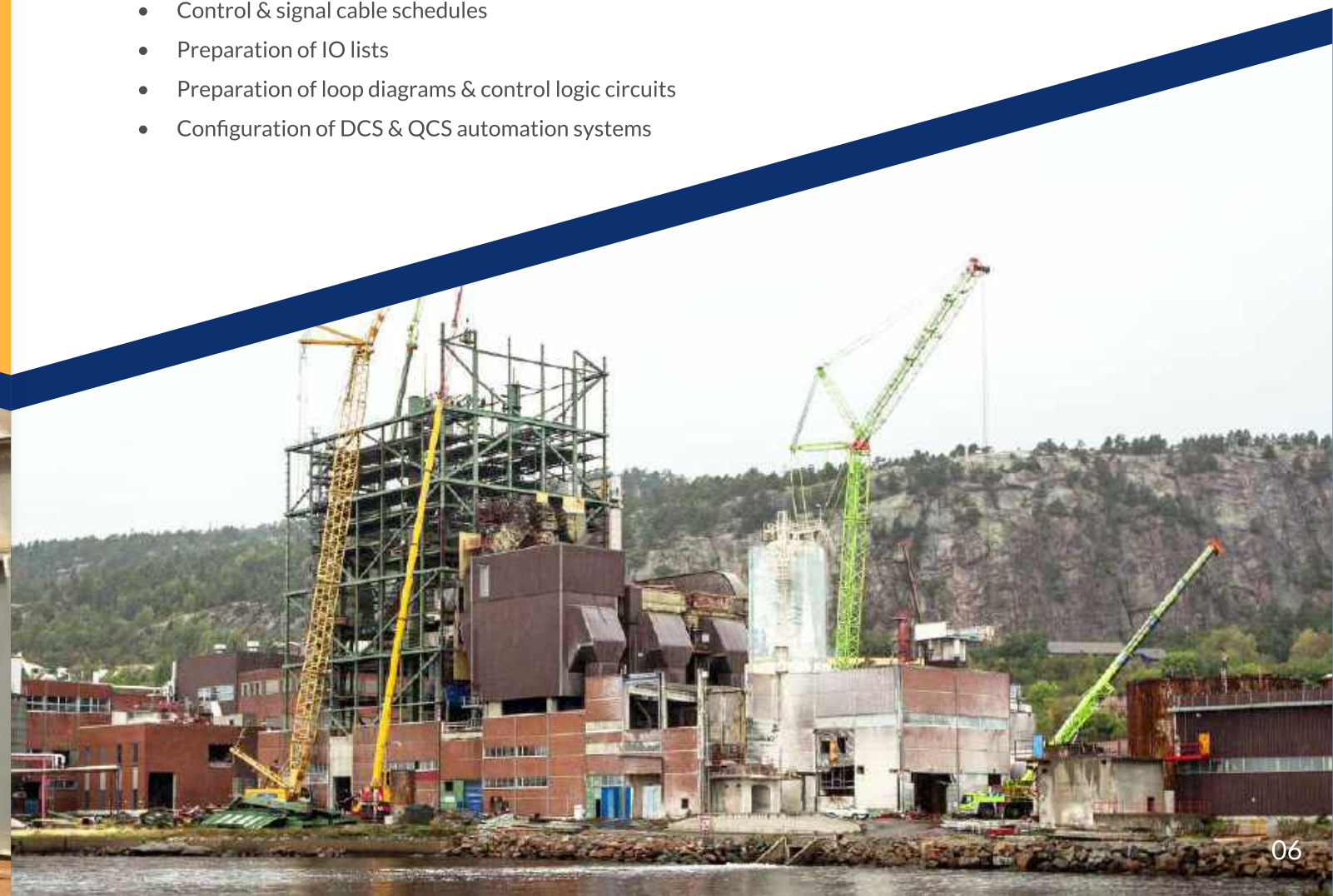
DIVERSE SERVICES



Consultancy Division

Our services mostly related with design, basic and detailed engineering including procurement assistance for paper mills and auxiliary systems i.e., stock preparation, approach flow, paper machine and finishing houses include the following:

- Setting project standards
- Numbering systems for mechanical, electrical & instrumentation work
- Basic engineering & designing of process flow diagrams
- P & I diagram of the areas
- Basic overall plant layout
- GA drawings of the plant & equipment
- Design & layout of piping, electrical & instrumentation
- Design of sectional drives
- Design of vacuum system & steam/condensate system
- Load data of PM & equipment
- Utility requirement viz., steam, air, water & power
- Configuration of chests, tanks & other related constructions
- Sole plate layout of paper machines
- Isometric drawings of piping including BOM
- BOM of plant & equipment
- Designing of power distribution systems for paper machine & auxiliaries
- Cable schedules & termination details
- Control & signal cable schedules
- Preparation of IO lists
- Preparation of loop diagrams & control logic circuits
- Configuration of DCS & QCS automation systems





Consultancy Division

Helping clients to maximize the quality of products and process, maximize competitiveness and profitability. Clients need consultancy that is measurable & where the results are tangible. SFE offers the entire spectrum of concept to commissioning consultancy services for the Pulp & Paper industry through a single window. Ready to serve you with its computer aided system, from analysis to implementation, no task is too big or too small, too simple or too complex for SFE.

Find the right balance with SFE Consultancy Services, Feasibility Studies & Project Report

Market studies and economic analysis, product-mix selection/optimization, raw material investigation, infrastructure & utilities study, site selection & soil investigation, technical feasibility, environmental study, economic viability, liaison/assistance with Financial Institutions and other agencies

Detail Engineering:

Plant wise equipment layout, piping engineering, master equipment list, flexibility analysis of hot pipes, BOM of pipes, civil & structural design for foundations & buildings, electrical room layout, HT/LT single line diagram, cable schedule & interconnection chart, control & instrumentation system design, DCS room/rack room layout, control cable schedule, I/O list & loop list etc.

Basic Engineering:

Plant conceptual design, master planning, systems design, material balance, flow sheets, development of plot plan and plant wise layout.

Start-up & Commissioning:

Individual equipment start-up, interlock checking, section wise start-up, total plant commissioning.

Service for Running Plants:

Day to day trouble shooting, cost reduction, quality improvement, increase production, revival of closed units. These are added dimensions of Sharma Fabricators & Erectors (P) Ltd. in capability, approach, services & scope. Our goal is to ensure our clients staying ahead in the quality race. Just give us a call to have the flavour of our services and feel assured.



SERVICE THAT SATISFY



MECHANICAL DIVISION

New Machinery & Equipment

- Unloading
- Shifting from storage yard to erection site
- Placement of equipment & marking on foundations
- Initial and final alignment
- Commissioning assistance

Second-hand/Overseas Plants/Re-location

- | | |
|---|-----------------|
| <ul style="list-style-type: none"> • Surveying • Match-marking • Dismantling • Packing | at old location |
| <ul style="list-style-type: none"> • Overhauling • Modification-retro fitment • Revamping • Re-erection • Commissioning assistance | at new location |

Erection

- Installation of new/old machines with latest level and alignment instruments
- Installation of pump, agitator, drive, turbine, generator, mixer refiner, pulper etc.
- Fabrication of mild steel/stainless steel items such as tanks, chutes, ducts etc.
- Fabrication and erection of static equipment such as columns, platforms, walkways, vessels, heat exchangers, steel structures, reactors, cooling tower etc.
- Installation of heavy machinery
- Installation of conveyors
- Special welding and heat stress treatment



Overhauling:

- Unloading
- De-stuffing
- Inspection
- Shifting
- Overhauling
- Boxing

Non-Destructive Testing:

- Radiography
- Ultrasonic testing
- DP test
- Cotton ball testing

Piping Division

- CS/MS/SS/GI piping for stock preparation
- Approach flow
- Steam & condensate system
- Vacuum system
- Broke handling system
- White water system
- Fresh water system
- Shower water system
- Instrument & mill air piping

Small Bore Piping and Tubing:

- Central oil & lubrication system
- Central greasing system
- Hydraulic system
- Cross country pipe line
- Picking & passivation of CS/MS/SS lines by online & dip process





ELECTRICAL DIVISION



ELECTRICAL DIVISION

Comprehensive Installation and Commissioning of

- D.G. sets
- PCC & MCC panel erection & wiring
- Sub stations
- Transformers
- Circuit breakers
- MCC's & PCC's
- Motors
- Control Panels & Junction boxes
- Fabrication and erection of cable trays
- Cable laying, dressing & tagging, glanding & termination, earthing
- Testing & no-load trials

INSTRUMENTATION DIVISION

- Installation of DCS panels & junction boxes
- Installation of field & online instruments
- Installation of QCS & UPS system
- Vacuum system
- Fabrication & erection of control cable trays
- Laying, glanding and termination of control cables
- Overhauling of old CV & other instruments
- Interlock checking
- Hot & cold test

SERVING INDUSTRIAL GROWTH

We serve

- Asset relocation
- Environment control systems
- Fertilizer plants
- Mineral beneficiation
- Petrochemicals and refineries
- Pulp and paper mills
- Power plants
- Textile industry
- Various process plants
- Water management systems



MEN AT THE HELM



Mr. Vinod Sharma
Managing Director

With the leadership of Vinod Sharma, SFE group found new meaning and diversified its operations and horizons to multiple foreign location. Austria, Canada, Finland, Germany, Israel, Italy, Japan, Jordan, Portugal, Saudi Arabia, The US, Turkmenistan, UAE, Uruguay, Vietnam, New Caledonia and Indonesia all came within the reach of SFE and it won innumerable accolades from its long list of highly satisfied customers. Throughout his 30 years of focussed dedication to erection and commissioning of large projects Vinod Sharma is one name to recon with in the industry.



Mr. Srikumar Mukhopadhyaya
Electrical Engineer

23 years' experience in a big public sector undertaking in design, engineering, preparation of tender, technical evaluation, inspection, erection, supervision & commissioning assistance, as well as contract formulation, project management, commercial negotiation and legal affairs. 26 years' experience in all-round high managerial affairs including multiple overseas projects.



Mr. Milan Kumar Bose
Chemical Engineer

More than 52 years' experience in operation, design engineering, technical audit, feasibility studies and project management of paper mill projects.
Special expertise in the development of plot plan and design of stock preparation broke system, fibre recovery, approach flow, vacuum system, steam/condensate system etc.
Wide international work experience during multiple assignments.



Mr. Saurabh Dubey
Director - MBA

More than 29 years' experience in Project Marketing, management, Planning, Execution in the Paper Industry and other Industries such as Aluminium (Down & Up Stream), Environmental Control System, Water management and Hydra Carbons.
Special expertise in overseas dismantling projects and wide international work experience during multiple assignments.



Mr. Asim Kumar Rai
Mechanical Engineer, MBA

More than 29 years' experience in dismantling, overhauling and erection of variety project management of paper mill projects.
Wide international work experience during multiple assignments of Pulp & Paper projects as well as Petro-chemical and mineral projects having long experience in project management at Corporate and site levels.



Mr. Rajeev Mishra
Electrical Engineer

More than 20 years' experience in dismantling, overhauling and erection of various paper projects, refinery, mining projects.
Wide international work experience in tender preparation, pricing, negotiation with suppliers and project management at site level.

CERTIFICATIONS

Quality Objective - SFE - 2023

CORPORATE QUALITY OBJECTIVES

- To achieve 8% sustainable business growth rate every year in India and secure minimum one foreign project per annum.
- To control the average Project cost overrun within 2% and Time overrun within 5% for reasons attributable to SFE.
- To commit minimum 5% of Profit value towards employee facilities at Project sites.
- Ensure involvement of all through motivation, competency enhancement & limit the employee attrition to 5%.
- To maintain high standards of work and achieve an average of 90% client satisfaction with 1 % improvement every year over previous year's level.
- To achieve 0% accident rate at work sites.
- Not to indulge in any act of bribery, corruption & anti-trust activities and strictly follow the path of ethical business.

Date: 09/01/2023 (Managing Director)

QUALITY OBJECTIVES

- Completion of Erection of Pulp & Paper Projects on time.
- Technical execution of Projects as per laid down procedures, specifications and drawings with focus on minimizing deviations from specified requirements.
- Maintaining safe conditions at site as per contractual requirements, minimum standards of SFE and achievement of 0% accident rate.
- Limiting the SFE equipment damage, preventive maintenance expenditure within 5% of project value.
- Continuous skills up gradation, involvement, motivation and on the job training to all new employees at each site.
- Completion of actions agreed with the client within the decided time frame.

Date: 09/01/2023 (Managing Director)

OH&S POLICY

Sharma Fabricators and Erectors Pvt. Limited is strongly committed to:

- ✓ Prevent injury and ill health at workplace and maintain safe & healthy work environment.
- ✓ Comply with all applicable Occupational health & safety related applicable legal and other requirements.
- ✓ Strive to achieve continual improvement in OH&S management and OH&S performance.
- ✓ Not to indulge in any act of bribery, corruption & anti-trust activities and strictly follow the path of ethical business.

OH&S OBJECTIVES

- Maintain zero risk to our employees and other interested parties who may be exposed to OH&S risks associated with our activities.
- Maintain zero man-hour loss due to accidents and incidents.
- Maintain 100% compliance rate to use of Personal Protective Equipment (PPE).
- Train and re-train the Site Personnel for enhancing their competence in safety compliance.

Date: 09/01/2023 (Managing Director)

ISO and Ohsas Certifications

CERTIFICATE OF REGISTRATION

This is to certify that the management system of:

Sharma Fabricators & Erectors Pvt. Ltd.

Main Site: T-418-423, 3rd Floor, A Block, Palam Corporate Plaza, Rezang-la-Marg, Gurugram - 122017, Haryana, India

has been registered by Intertek as conforming to the requirements of:

ISO 9001:2015

The management system is applicable to:

Installation services of Equipment, Piping, Electricals, Instrumentation & Automation work.
Dismantling & Reinstallation of Industrial Plant such as Paper, Chemicals, Power.

Certificate Number: 0010766
Initial Certification Date: 21 May 2014
Date of Certification Decision: 02 August 2023
Issuing Date: 07 August 2023
Valid Until: 20 May 2026

Calin Moldovean
President, Business Assurance
Intertek Certification Limited, 10A Victory Park, Victory Road, Derby DE24 8ZF, United Kingdom
Intertek Certification Limited is a UKAS accredited body under schedule of accreditation no. 014.

In the issuance of this certificate, Intertek assumes no liability to any party other than to the Client, and then only in accordance with the agreed upon Certification Agreement. This certificate's validity is subject to the organization maintaining their system in accordance with Intertek's requirements for systems certification. Validity may be confirmed via email at certificate.validation@intertek.com or by scanning the code to the right with a smartphone. The certificate remains the property of Intertek, to whom it must be returned upon request.

CERTIFICATE OF REGISTRATION

This is to certify that the management system of:

Sharma Fabricators & Erectors Pvt. Ltd.

Main Site: T-418-423, 3rd Floor, A Block, Palam Corporate Plaza, Rezang-la-Marg, Gurugram - 122017, Haryana, India

has been registered by Intertek as conforming to the requirements of:

ISO 45001:2018

Certified to OHSAS 18001:2007 from 09 July 2018 to 27 March 2021

The management system is applicable to:

Installation services of Equipment, Piping, Electricals, Instrumentation & Automation work.
Dismantling & Reinstallation of Industrial Plant such as Paper, Chemicals, Power.

Certificate Number: 8117
Initial Certification Date: 09 July 2018
Date of Certification Decision: 02 August 2023
Issuing Date: 07 August 2023
Valid Until: 02 June 2024

Calin Moldovean
President, Business Assurance
Intertek Certification Limited, 10A Victory Park, Victory Road, Derby DE24 8ZF, United Kingdom
Intertek Certification Limited is a UKAS accredited body under schedule of accreditation no. 014.

In the issuance of this certificate, Intertek assumes no liability to any party other than to the Client, and then only in accordance with the agreed upon Certification Agreement. This certificate's validity is subject to the organization maintaining their system in accordance with Intertek's requirements for systems certification. Validity may be confirmed via email at certificate.validation@intertek.com or by scanning the code to the right with a smartphone. The certificate remains the property of Intertek, to whom it must be returned upon request.

